



Precision for your Design



JOYSTICKS

Thumb, Finger, Hand and Desktop Joysticks



MEGATRON

Our success story

MEGATRON is a specialist for mechatronic components for more than 50 years. In keeping with our motto "Precision for your Design," we offer a wide range of sensors, components, input devices and industrial joysticks.

Our products are deployed throughout a wide variety of applications across almost any area of the processing industry and we are leaders in selected market segments. The guiding principle for all our actions is to find the best possible solution regarding functionality and economic efficiency together with our customers. The development of this ideal "design-in" is deeply rooted in our company culture and can be seen in our flexibility, in our distinct know-how on the application and product level as well as in our efficient processes.

We put great emphasis on long-term cooperation and support you over the course of your application's entire life span. Our products and services are marketed worldwide by our approximately 60 Munich-based employees and partly by our distribution partners.





Service-friendly and versatile

TRY100 finger joystick

A very service-friendly finger joystick with high accuracy and low installation depth. Analog and digital output signals, protected up to IP67.

- Technology: Hall effect
- Axes: 1 to 3
- Installation depth < 26 mm
- Return: Spring return
- Output / Interface: Analog, USB, CAN J1939, CANopen



Robust with compact design

844 finger joystick

Premium finger joystick with robust mechanics and very low installation depth. Protection up to IP65.

- Technology: Hall effect
- Axes: 1 to 3
- Installation depth < 20 mm
- Return: Spring return
- Output / Interface: Analog, PWM



Versatile and varied

812 finger joystick

Versatile miniature joystick with compact dimensions. The wide range of knob design meets almost all needs.

- Technology: Hall effect or potentiometer
- Axes: 1 to 3
- Installation depth < 26 mm
- Return: Spring return or friction clutch
- Output / Interface: Analog





Cost-optimized switch stick

851 finger joystick

The optimized mechanics paired with micro-switches (IP65) enable reliable switching of currents up to 10 A and voltages up to 240 V AC.

- Technology: Switch
- Axes: 1 to 2
- Installation depth < 20 mm
- Return: Spring return
- Output / Interface: Digital (on / off)



High quality and safe

TRY22 finger joystick

High quality mechanics and redundant output signals make this joystick extraordinarily fail-safe.

- Technology: Hall effect
- Axes: 3
- Installation depth < 39 mm
- Return: Spring return
- Output / Interface: Analog

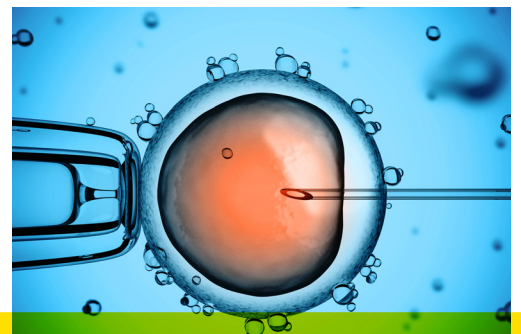


Synthesis of joystick and trackball with 6 degrees of freedom

SpaceMouse® Module finger joystick

Intuitive control of complex 3D movements: push, pull, slide, rotate, tilt. Ideal for robotics, medical technology, drones or visualization applications.

- Technology: Optoelectronic
- Axes: ≥ 4
- Installation depth < 15 mm
- Return: Spring return
- Output / Interface: USB, UART





Ready to use in a modern look

RS Desktop

Compact USB desktop joystick in a modern design with 6 buttons.

- Technology: Hall effect
- Axes: 3
- Return: Spring return
- Output / Interface: USB



Optimized and versatile

830 finger joystick

Robust mechanics meets proven potentiometer technology.

- Technology: Potentiometer
- Axes: 1 to 2
- Installation depth < 36 mm
- Return: Spring return
- Output / Interface: Analog



Compact and permanently reliable

TRY20 thumb joystick

Modern Hall technology and high quality mechanics in a reduced design.

- Technology: Hall effect
- Axes: 2 to 3
- Installation depth < 31 mm
- Return: Spring return
- Output / Interface: Analog





Precision in every detail

826 finger joystick

Joystick with distinctive reliability and configurable switching functions.

- Technology: Potentiometer
- Axes: 1 to 2
- Return: Spring return or friction clutch
- Output / Interface: Analog



Constant haptics a lifetime

XTbar finger joystick

Sensitive control with little noise in the output signal.

- Technology: Hall effect
- Axes: 1
- Installation depth <37 mm
- Return: Friction clutch
- Output / Interface: Analog or PWM

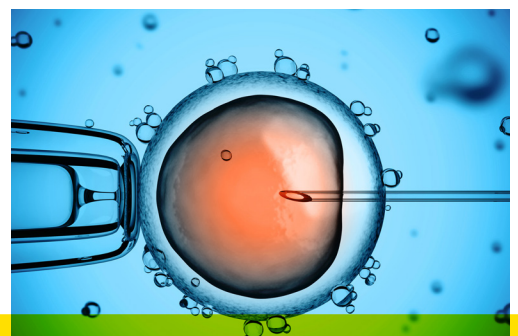


Variations of one dimension

829 finger joystick

1-axis joystick with extensive configuration options.

- Technology: Hall effect or potentiometer
- Axes: 1
- Installation depth <41 mm
- Return: Spring return or friction clutch
- Output / Interface: Analog





Industrial joystick for challenging applications

TRY80 hand joystick

With optionally available safety features it is also suitable for critical applications. Various knob versions with and without push buttons, analog and digital signal outputs, e.g. USB and CAN bus.

- Technology: Hall effect
- Axes: 2
- Return: Spring return, friction clutch
- Output / Interface: Analog, USB, CAN J1939, CANopen

NEW!



Individual configurations, ergonomic – and always reliable

TRY54 hand joystick

The TRY54 was developed specifically for the high demands of heavy-duty and off-road use. The individual configuration of the joystick functions is as simple as the installation. SIL 2 compatible - Reliability through redundant Hall sensors. Withstands axial loads up to 1780 N with up to 10 million movement cycles. Low installation depth for space-saving positioning in the application.

- Technology: Hall effect
- Axes: ≥ 4
- Return: Spring return
- Output / Interface: CAN J1939



Compact, highly resilient and multifunctional

TRY52 hand joystick

Robust joystick: Up to 10 million movement cycles at high loads, protection up to IP68, multifunctional handle for additional functions (push buttons, rockers, deadman, etc.)

- Technology: Hall effect
- Axes: 1 to 2
- Return: Spring return
- Output / Interface: Analog, USB, CAN J1939, CANopen





For the toughest Heavy-Duty use

870 hand joystick

Ideal for mobile working and special purpose: Robust structure for 5 million movements, wear-free due to Hall technology, knobs with push buttons and rockers.

- Technology: Hall effect
- Axes: 2 to 3
- Return: Spring return, friction clutch
- Output / Interface: Analog



Limited to what is essential - the small Cobra knob

871 hand joystick

The 871 series are well suited for applications in harsh environments. The ergonomic Cobra handle offers space for individual functions. Expected life span up to 5 million operations.

- Technology: Hall effect
- Axes: 2 to 4
- Return: Spring return
- Output / Interface: Analog



Multifunctional with Cobra knob

891 hand joystick

Ergonomic and multifunctional: Up to 6 microswitches (middle, end position, etc.), 4 buttons and 2 switches.

- Technology: Hall effect or potentiometer
- Axes: 1 to 4
- Return: Spring return, friction clutch
- Output / Interface: Analog





Ergonomics and technology up to date

846 finger joystick

Standard redundant dual outputs. Various colored knob inserts with degree of protection IP67.

- Technology: Hall effect
- Axes: 1
- Return: Spring return, friction clutch
- Output / Interface: Analog

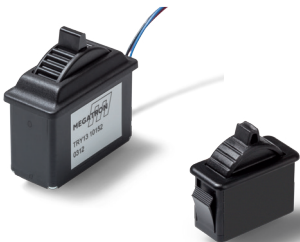


Ergonomic joystick rocker

PW30 thumb joystick

Ergonomic 1-axis joystick as stand-alone or integrated input element.

- Technology: Hall effect or potentiometer
- Axes: 1
- Installation depth <41 mm
- Return: Spring return, end position control
- Output / Interface: Analog



Small and sensitive - but with great function

TRY13/13m thumb joystick

One of our smallest joysticks with Hall sensor - now even smaller in the mini version: Sensitive response and ergonomic thumbwheel.

- Technology: Hall effect
- Axes: 1
- Return: Spring return
- Output / Interface: Analog



Waterproof and safe

TRY14 thumb joystick

Waterproof according to protection class IP68 (1 meter) / IP69K. Installation and service-friendly. Optionally available with pushbutton function in the knob.

- Technology: Hall effect
- Axes: 1 to 2
- Return: Spring return
- Output / Interface: Analog



MEGATRON

your solution – our adjustment

It is one of MEGATRON's specialties to adjust almost every product regarding its function, design and mechanical as well as electrical interfaces to the specific needs of the customer – also for small quantities. This is possible due to our variety of options, our modular product concepts and our flexible organisation.

Therefore, you will receive a functional and economic solution within your existing and desired design. With MEGATRON, you can reduce your costs and realise short development periods. That way, we provide you with an advantage in competition.

MEGATRON Elektronik GmbH & Co. KG is a leading German supplier of precision sensors, industrial joysticks, small plastic parts and electronic housings. Founded in 1960, MEGATRON is an owner-run company based in Putzbrunn near Munich, Germany. It develops, produces and markets its own products as well as those of its longstanding international partners all over the world. MEGATRON works closely with OEM customers to develop individual and economical product solutions. A wide selection of immediately available stock items completes the portfolio.

Edition November 2018