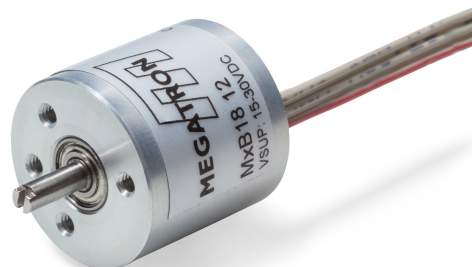


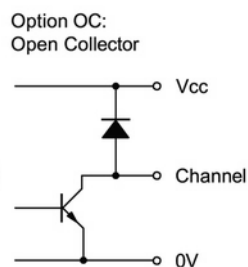
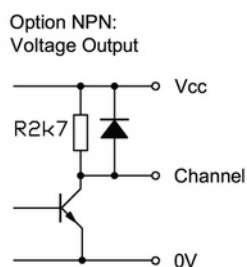
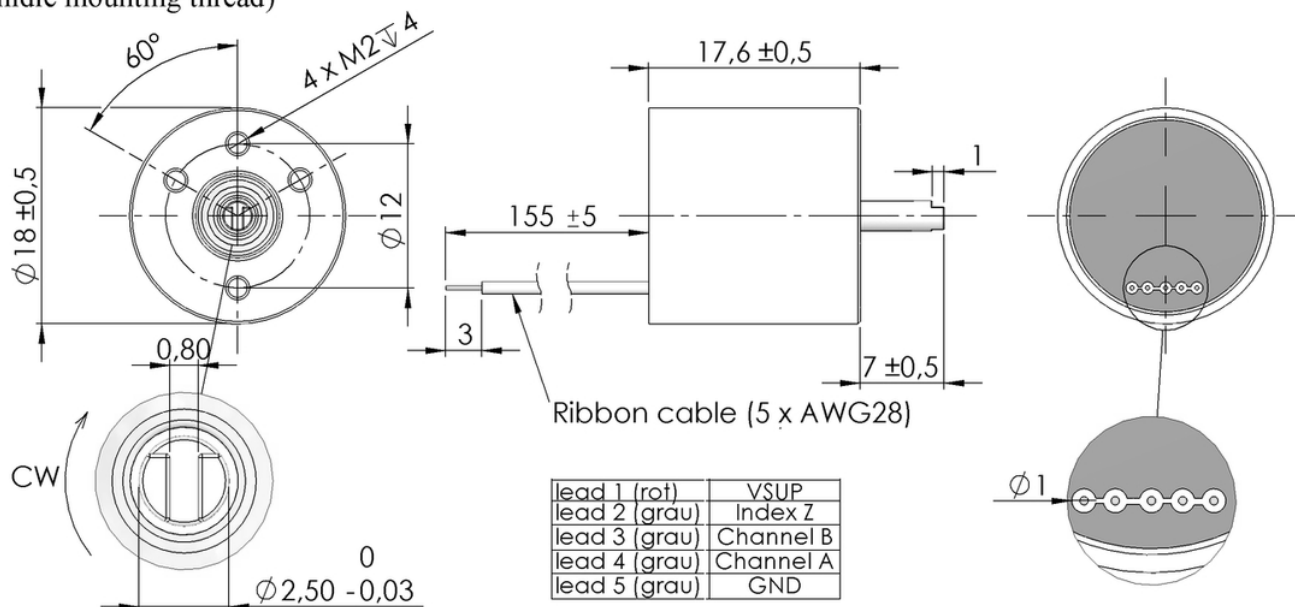
Series MIB18 / Incremental Hall Effect Encoder

- Housing Diameter 18 mm
- Protection Class IP65
- Resolution up to 1024 ppr.
- 2 Channels and Index
- 2 Precision Ball Bearings
- Operation Voltage 5 V

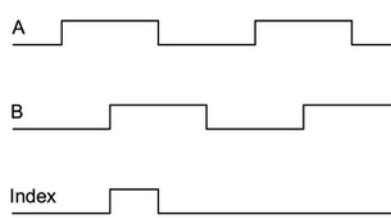


Drawing

In this view: Index Z positioned acc. option N (slot on the shaft and flat fall in line with the middle mounting thread)



Signal characteristics in CW



Series MIB18 / Incremental Hall Effect Encoder

Electrical Data

Pulses	1-128, 256, 512, 1024 ppr
Output Channels	A, B, Z
Limit Frequency	500 kHz
Supply Voltage	5 V \pm 10% (Ripple < 100mVpp)
Supply Current (no load)	< 20 mA

Mechanical Data

Maximum rotational speed	6000 rpm
--------------------------	----------

Other Data

Protection Class	IP65
Operating Temperature	-40 .. + 85 °C (Erweiterter Temperaturbereich auf Anfrage)
Storage Temperature	-40 .. + 105 °C
Bearing	2 Precision Ball Bearings
Housing Material	Aluminium
Shaft Material	Stainless Steel
Weight	≈ 20 g

Series MIB18 / Incremental Hall Effect Encoder

Order Description and Options

Series MIB18	MIB18				
<u>Resolution [Pulses per revolution]</u>		1024			
		512 (*)			
		256 (*)			
		2...128 (*)			
<u>Supply voltage / Output signal</u>					
5 V / Open Collector			05 BZ OC		
Zero point alignment of the index pulse				N (*)	
Other shaft length [mm]					Axx (*)
Other cable length [m]					CVxx(*)

"bold print = standard option"

(*) = on request available for projects

06.07.2016