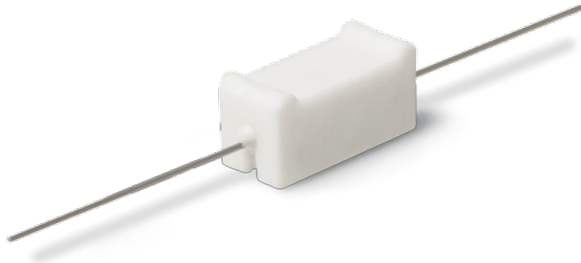


Data Sheet for Precision Resistor

Power Resistor in Ceramic Housing (wirewound)

Series MCU



- Wirewound resistor, inorganic construction
- Power rating up to 15 Watt
- Resistance values from 0.01Ω..90kΩ
- Resistance tolerances up to ±0.01%
- TCR ±20ppm/°C R>10Ω
- Non-inductive windings (option)
- Flame proofed
- With spacer (option)

Electrical Specification	MCU				
	1	2	3	4	5
Resistance range	0.01Ω..12kΩ	0.01Ω..22kΩ	0.01Ω..45kΩ	0.01Ω..65kΩ	0.01Ω..91kΩ
Resistance tolerance	±0.01%..±10%				
Power rating @ 70°C (0W @ +275°C)	2W	3W	5W	10W	15W
TCR-rate	±20ppm/°C @ R > 10Ω, ±50ppm/°C @ R ≥ 1Ω..10Ω (±90ppm/°C @ R < 1Ω on request)				
Working temperature range (max.)	-55 °C up to +275 °C				

Mechanical Specification	
Resistance technology / material	Wirewound / wire alloy
Housing material	Ceramics
Connections	Axial cooper tinned

Parameters	Test Conditions (MIL-STD 202)	Specification
Dielectric	See norm	±0.2% +0.05Ω
Load life	See norm	±1% +0.05Ω
Storage	See norm	±0.2% +0.05Ω
Moisture resistance	See norm	±0.2% +0,05Ω
Thermal shock	See norm	±0.2% +0.05Ω
5X Overload (5s)	See norm	±0.2% +0.05Ω
Shock	See norm	±0.1% + 0.05Ω
Vibration	See norm	±0.1% + 0.05Ω

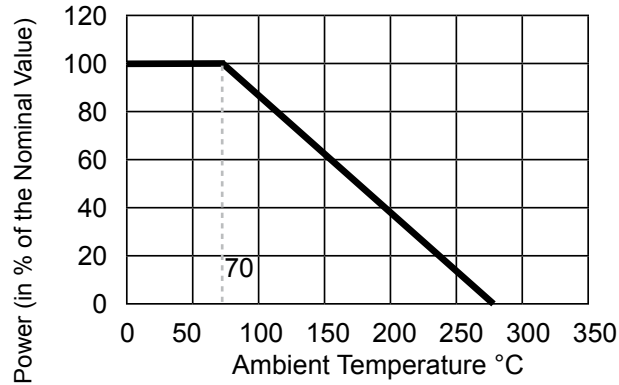
Dielectric strength: 1500 VAC

Data Sheet for Precision Resistor

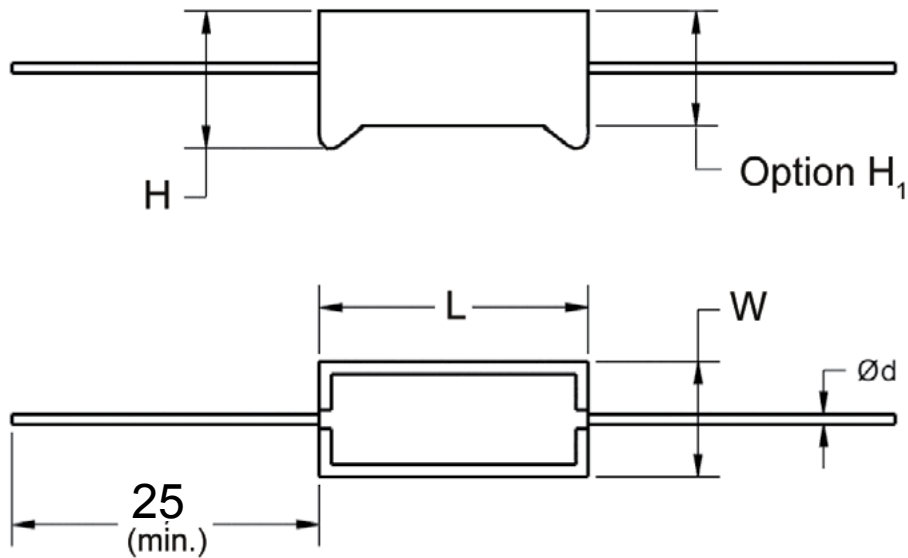
Power Resistor in Ceramic Housing (wirewound)

Series MCU

Power Derating Curve



Drawing



Dimensions in mm

	$L \pm 1.0$	$H \pm 1.0$	$H_1 \pm 1.0$ Option (with spacer)	$W \pm 0.4$	$\varnothing d \pm 0.4$
MCU-1	17.8	6.2	7.6	65	0.8
MCU-2	22.2	7.9	9.5	7.9	0.8
MCU-3	22.2	9.5	11.1	9.5	0.8
MCU-4	48	9.5	12.7	9.5	1.0
MCU-5	48	12.7	15.9	12.7	1.0

Data Sheet for Precision Resistor

Power Resistor in Ceramic Housing (wirewound)

Series MCU

Order code

Description	Selection: standard=black/bold , possible <i>options=grey/italic</i>						
Series:	MCV						
Type / size:							
1 (max. 12kΩ)		1					
2 (max. 22kΩ)		2					
3 (max. 45kΩ)		3					
4 (max. 65kΩ)		4					
5 (max. 91kΩ)		5					
Resistance tolerance:							
±0,02%				W0,02%			
±0,05%				W0,05%			
±0,1%				W0,1%			
±0,25%				W0,25%			
±0,5%				W0,5%			
±1%				W1%			
±5%				W5%			
±10%				W10%			
<i>Option ±0,01%</i>				<i>W0,01%</i>			
Temperature coefficient:							
±20ppm/°C @ R >10Ω					TK20		
±50ppm/°C @ R ≥ 1Ω..10Ω					TK50		
<i>Option ±90ppm/°C @ R < 1Ω</i>					<i>TK90</i>		
Resistance value - please choose:							
From 0,01Ω bis ≤ see type						xxkxxx	
<i>Option non-inductive windings:</i>							
<i>max. resistance value / 2</i>							<i>N</i>
<i>Option spacer:</i>							<i>H1</i>

Order Example	Series	Type	Resistance tolerance	Temperature coefficient	Resistance value	Inductance	Spacer
Choice	MCU	1	±1%	20ppm/°C	10,1kΩ	Standard	Yes
Code	MCU	1	W1%	TK20	10k100	-	H1