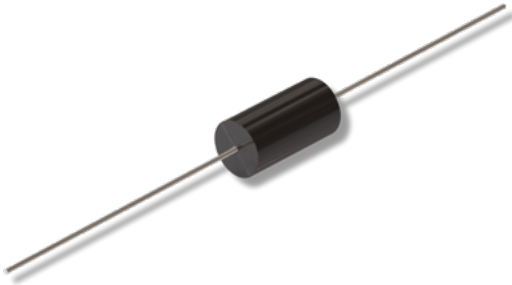


# Data Sheet for Precision Resistors

Wirewound Resistor

Series ASTRO2



- Resistance range from 1 Ω up to 5 MΩ
- Exact values up to 0.005% resistance tolerance
- Temperature coefficients up to ±10ppm/°C (up to ±1ppm/°C on request)
- Resistance sets up to ±0.001% and ±0.5 ppm/°C
- Special lead wire bending on request
- Long-term stability ±100ppm/year (a very stable version with ±20ppm/year is available on request)
- On request with Balco or platinum connectors for high TC values
- On request in very high or low TC configurations from -20 ppm/°C to +6000 ppm/°C

Electrical Specification	ASTRO2								
	005	015	100	110	200	500	040	600	800
Resistance range from 1Ω..	..150kΩ	..750kΩ	..1MΩ	..1.2MΩ	..2.5MΩ	..3.8MΩ	..5MΩ	..5MΩ	..5MΩ
Resistance tolerance	±0.005%..±0.1%								
Power rating (0W @ max. +145°C - see derating curve)	0.08W	0.175W	0.2W	0.25W	0.33W	0.5W	0.5W	1W	1.5W
Max. working voltage	100V	200V		300V	400V		600V	800V	900V
TCR-rate	±10ppm/°C @ R > 100Ω ±20ppm/°C @ R = 10Ω..100Ω ±30ppm/°C @ R = 5Ω..10Ω ±50ppm/°C @ R = 1Ω..5Ω								
Working temperature range (max.)	-55 °C up to +145 °C								

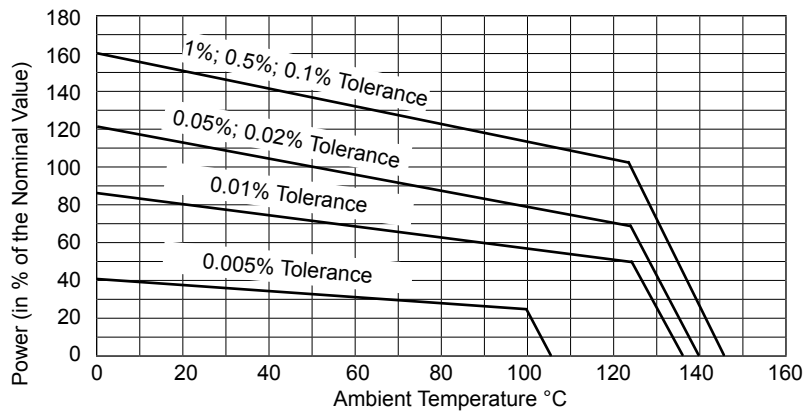
Mechanical Specification	
Resistance technology / material	Wirewound / wire alloy
Housing material	Epoxy moulded
Connections	Axial cooper tinned

# Data Sheet for Precision Resistors

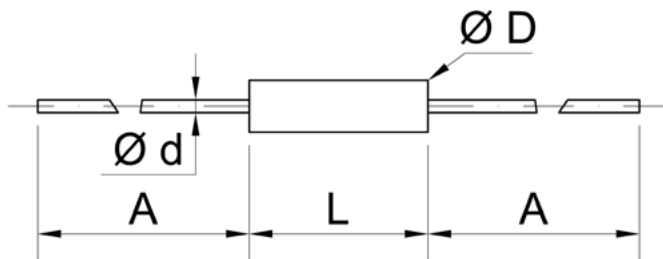
Wirewound Resistor

Series ASTRO2

## Power Derating Curve



## Drawing



ASTRO2	A (min.)	L ( $\pm 0,64$ mm)	$\text{Ø}D$ ( $\pm 0,13$ mm)	$\text{Ø}d$ ( $\pm 0,05$ mm)
005	38.0 mm	6.6 mm	3.2 mm	0.5 mm
015	38.0 mm	9.5 mm	4.7 mm	0.6 mm
100	38.0 mm	9.5 mm	6.4 mm	0.8 mm
110	38.0 mm	12.7 mm	6.4 mm	0.8 mm
200	38.0 mm	19.1 mm	6.4 mm	0.8 mm
500	38.0 mm	19.1 mm	9.5 mm	0.8 mm
040	38.0 mm	25.4 mm	9.5 mm	0.8 mm
600	38.0 mm	25.4 mm	12.7 mm	0.8 mm
800	38.0 mm	38.1 mm	12.7 mm	0.8 mm

# Data Sheet for Precision Resistors

Wirewound Resistor

Series ASTRO2

## Order code

Description	Selection: <b>standard=black/bold</b> , possible <i>options=grey/italic</i>				
Series:	<b>ASTRO2</b>				
Type / size:					
005 (max. 150kΩ)		<b>005</b>			
015 (max. 750kΩ)		<b>015</b>			
100 (max. 1MΩ)		<b>100</b>			
110 (max. 1.2MΩ)		<b>110</b>			
200 (max. 2.5MΩ)		<b>200</b>			
500 (max. 3.8MΩ)		<b>500</b>			
040 (max. 5MΩ)		<b>040</b>			
600 (max. 5MΩ)		<b>600</b>			
800 (max. 5MΩ)		<b>800</b>			
Resistance tolerance:					
±0.1% @ R >1Ω				<b>W0,1%</b>	
±0.05% @ R >1Ω				<b>W0,05%</b>	
±0.01% @ R >1Ω				<b>W0,01%</b>	
±0.005% @ R >100Ω				<b>W0,005%</b>	
Temperature coefficient:					
±10ppm/°C @ R > 100Ω					<b>TK10</b>
±20ppm/°C @ R = 10Ω..100Ω					<b>TK20</b>
±30ppm/°C @ R = 5Ω..10Ω					<b>TK30</b>
±50ppm/°C @ R = 1Ω..5Ω					<b>TK50</b>
Resistance value - please choose: From 1Ω to ≤ see type					<b>xxxxkxxx</b>

Order Example	Series	Type	Resistance tolerance	Temperature coefficient	Resistance value
Choice	ASTRO2	200	±0.1%	10ppm/°C	10.1kΩ
Code	ASTRO2	200	W0,1%	TK10	10k100