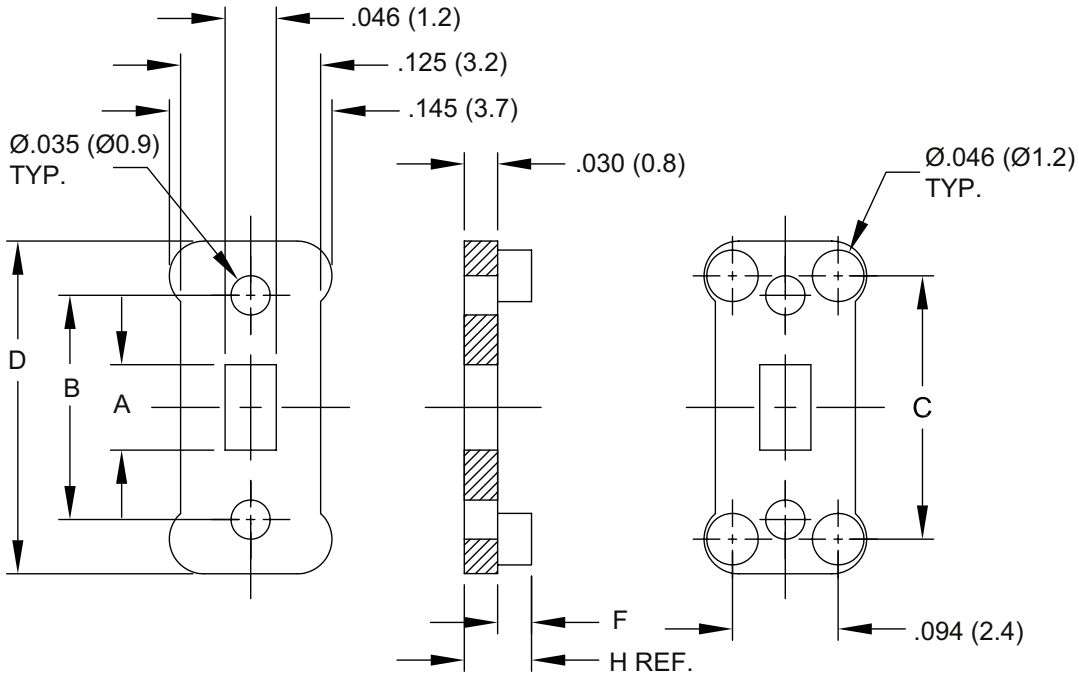


Dimensions in inch (mm)

**Series ELBSI**



Article	H	F	A	B	C	D
ELB SI-30-200	.030 (.76)	.000				
ELB SI-31-200	.060 (1.5)	.030 (.76)	.076 (1.9)	.200 (5.1)	.235 (6.0)	.297 (7.5)
ELB SI-32-200	.090 (2.3)	.060 (1.5)				
ELB SI-37-300	.090 (2.3)	.060 (1.5)	.176 (4.5)	.300 (7.6)	.335 (8.5)	.397 (10.1)
ELB SI-40-400	.030 (.76)	.000				
ELB SI-41-400	.060 (1.5)	.030 (.76)	.276 (7.0)	.400 (10.2)	.435 (11.0)	.497 (12.6)
ELB SI-42-400	.090 (2.3)	.060 (1.5)				
ELB SI-45-500	.030 (.76)	.000				
ELB SI-46-500	.060 (1.5)	.030 (.76)	.376 (9.6)	.500 (12.7)	.535 (13.6)	.597 (15.2)
ELB SI-47-500	.090 (2.3)	.060 (1.5)				
ELB SI-52-600	.090 (2.3)	.060 (1.5)	.476 (12.1)	.600 (15.2)	.635 (16.1)	.697 (17.7)
ELB SI-55-700	.030 (.76)	.000				
ELB SI-56-700	.060 (1.5)	.030 (.76)	.576 (14.6)	.700 (17.8)	.735 (18.7)	.797 (20.2)
ELB SI-57-700	.090 (2.3)	.060 (1.5)				