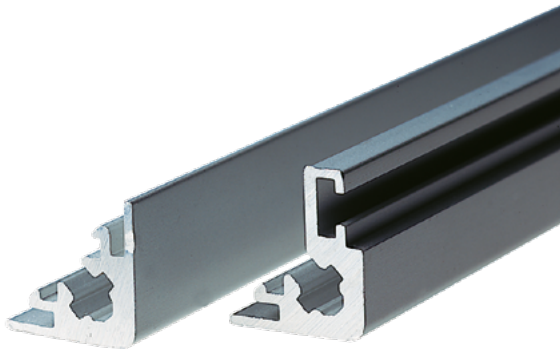


Data Sheet for Aluminium Housing

Electronics aluminium bar profile

Series STP



Profile K

Profile G

The STP aluminium bar profiles are designed for the self-assembly of individual aluminium housings and can be combined with each other. Various dimensions can be achieved by using the corresponding covers and end plates. The bar profiles are available as yard goods with a maximum length of 1500 mm. We can cut them to the desired length. We also offer the option of providing a complete housing. The profiles have an anodized aluminium surface (black anodized available as an option). The bar profiles have grooves for mounting the covers with a maximum thickness of 1.6 mm material thickness.

For profile K: Insert the aluminium covers into the groove and secure the end plates using M5x20 screws.

For profile G: Insert the aluminium covers into the grooves. Screw the side parts with M3x4 screws and M3 nuts. Screw the end plates to the profiles with M5x20 screws.

Data Profile	K	G
External dimension height	16 mm	18 mm
External dimension width	16 mm	
T groove	no	yes
Material	ALMgSi 0,5 F22	
Material thickness	1.2 mm	
Colour	Aluminium nature anodised (optional black anodised)	
Mass ca.	0.26 kg/m	0.29 kg/m

Mounting Cover and End Plates	K	G
Feed for screws end plates	M5	
Feed for cover	max. 1.6 mm	
T groove feed	-	Nut and screw M3
Mounting parts	Not included	

Data Sheet for Aluminium Housing

Electronics aluminium bar profile

Series STP

Order Code bar profile

Description	Selection: standard=black/bold , possible <i>options=grey/italic</i>						
Series:	STP						
Profile design: Profile K Profile G		K G					
Profile length: 1000 mm <i>Option custom length* <1500 mm</i>			1000 <i>XXXX</i>				
Profile colour: Aluminium nature anodised <i>Option aluminium black anodised</i>				A <i>N</i>			

*Minimum order quantity ≥100 pieces (= 25 housings)

Order Code side panels

Description	Selection: standard=black/bold , possible <i>options=grey/italic</i>						
Side panels (depth 1,5 mm): 89 x 1000 mm 100 x 250 mm 250 x 250 mm 250 x 500 mm <i>Option custom dimensions*</i>		89 x 1000 100 x 250 250 x 250 250 x 500 <i>... X ...</i>					
Profile colour: Aluminium nature anodised			A				

*Minimum order quantity ≥100 pieces (= 25 housings)

For higher quantities or on-going demand, additional options are available as described below on request

For Example: Perforated aluminium sheet, processing of the housings such as drilling, punching, milling etc. as well as printing, customer-specific colours according to customer requirements. Customized processing of end plates, other thicknesses and materials. Chromate the bare housing and plates and more.

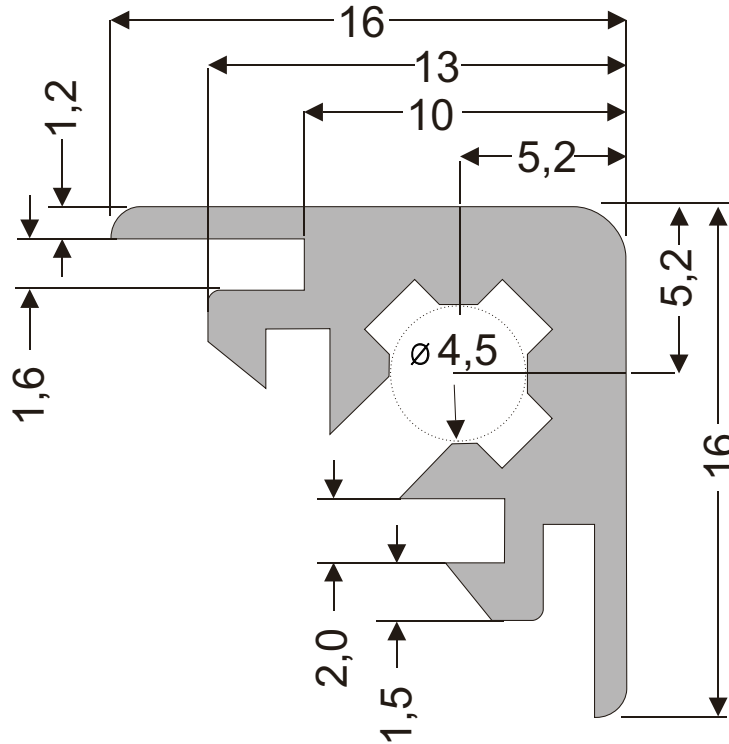
Data Sheet for Aluminium Housing

Electronics aluminium bar profile

Series STP

Drawing

Profile K



Profile G

