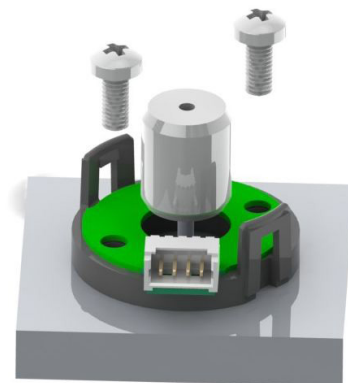


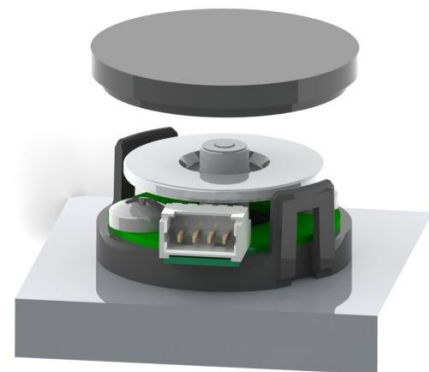
### 1. Mounting of the base

Place base on the mounting surface. Slip centering tool onto shaft and through the hole in the base to center it. Secure base using the two screws.



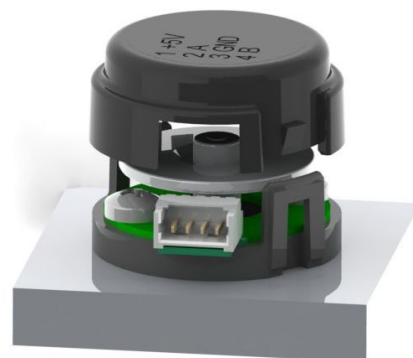
### 2. Axial adjustment of the codewheel

Place codewheel onto shaft with pattern-side down towards base. Position spacer tool (included in delivery) onto codewheel. Press down firmly until tool bottoms out on base latches.



### 3. Snap cover

Snap cover down onto base. With thumb and finger, squeeze base latches together to ensure they are fully engaged with the cover.



### Order Code Centering Tool

Shaft diameter 1,5 mm	SPDH ZENTRIERHÜLSE 1,5 MM
Shaft diameter 3 mm	SPDH ZENTRIERHÜLSE 3 MM
Shaft diameter 3,175 mm	SPDH ZENTRIERHÜLSE 3,175 MM
Shaft diameter 4 mm	SPDH ZENTRIERHÜLSE 4 MM
Shaft diameter 5 mm	SPDH ZENTRIERHÜLSE 5 MM
Shaft diameter 6 mm	SPDH ZENTRIERHÜLSE 6 MM
Shaft diameter 6,35 mm	SPDH ZENTRIERHÜLSE 6,35 MM