

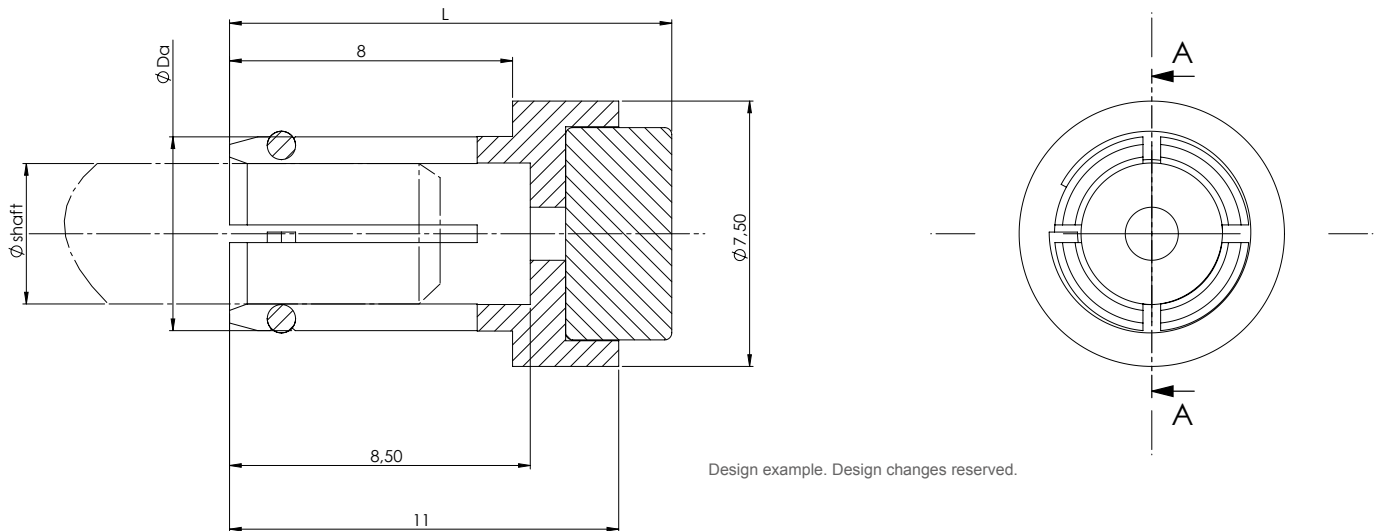
Data Sheet for sensor accessories

Magnet holder push-on type

Series MHA

Drawing

An adhesive, such as 2K-EP, may be suitable for a permanent fixation of the position of the magnet holder on the shaft. For the reliable operation of the kit encoder, please refer regarding the guided installation distances of the magnet in relation to the sensor housing, as described in the data sheet of the kit encoder.



Dimensions			
\varnothing shaft in application [mm] Tolerance band g7 / f7	\varnothing Da [mm] magnet holder	L magnet holder for kit encoder with single electronic [mm]	L magnet holder for kit encoder with redundant electronic [mm]
3	4,5	12	12,5
3,175	4,5	12	12,5
4	5,5	12	12,5
5	6,5	12	12,5
6	7,5	12	12,5
6,35	7,5	12	12,5
8	9,5	12	12,5
10	11,5	12	12,5

Information are subject to possible design changes. Actual dimensions may vary.